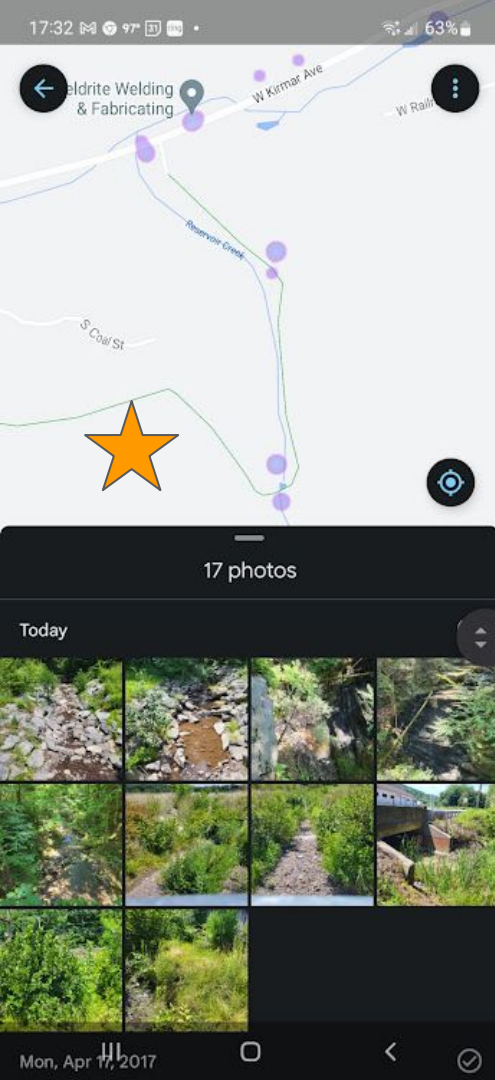


Newport, Warrior and Espy Watersheds

Where's the water?
7/27/22 recon



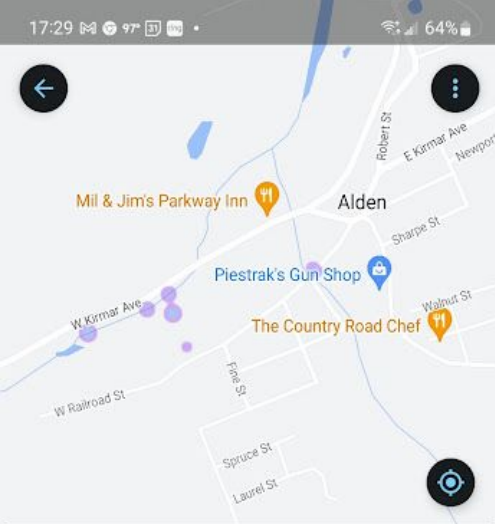
Reservoir Creek and Auchencloss Discharge (dry)

2nd wooden bridge @ old dam chem.

- Temp. 19 C = 66 F
- D.O. 8.26 mg/L
- Cond. 71.0 uS/cm
- TDS 40.1 mg/L
- pH 7.09 su
- ORP 161.3 mV
- Flow 0.06 cfs = 27 gpm

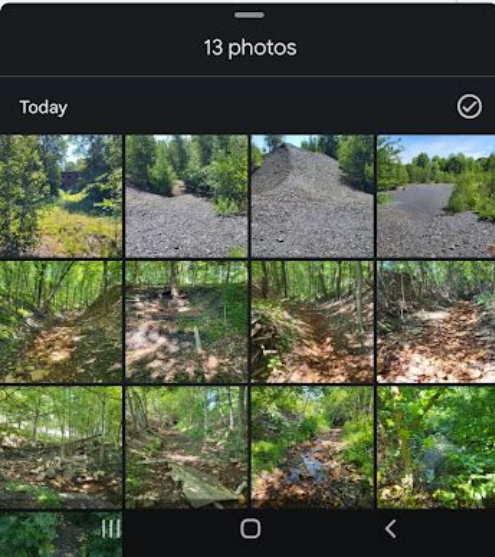


Auchencloss Discharge dry



Fairchild (Forge) Creek (dry) & South Branch Newport above #13; Center St. Br. (dry)

All were dry, but found some orange water running in stream channel for a distance above #13. Potentially AMD that percolates in the stream bed.



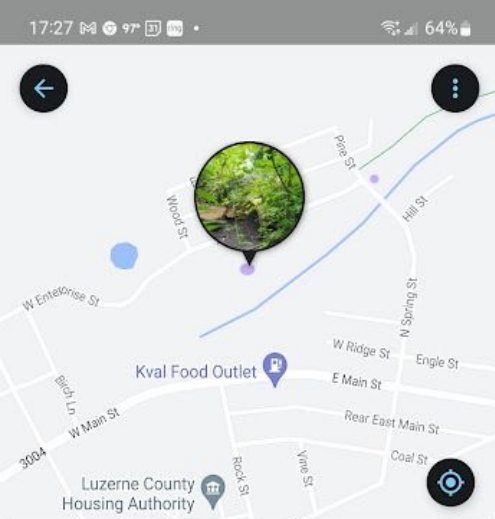
Forge Creek @ RR St.



S B Newport above #13



S B Newport @ Center St

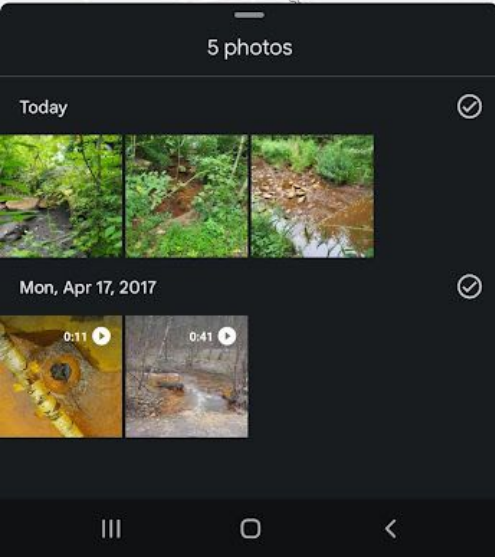


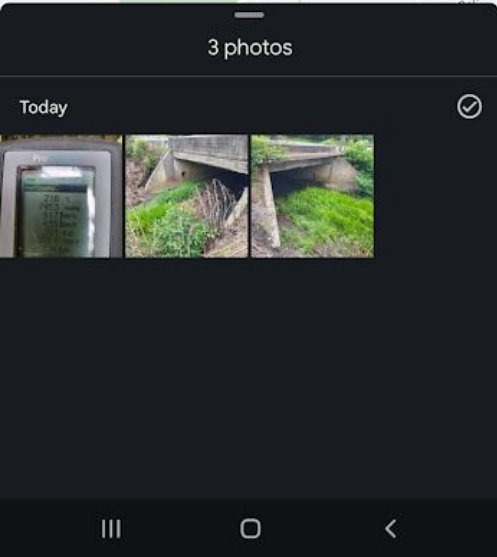
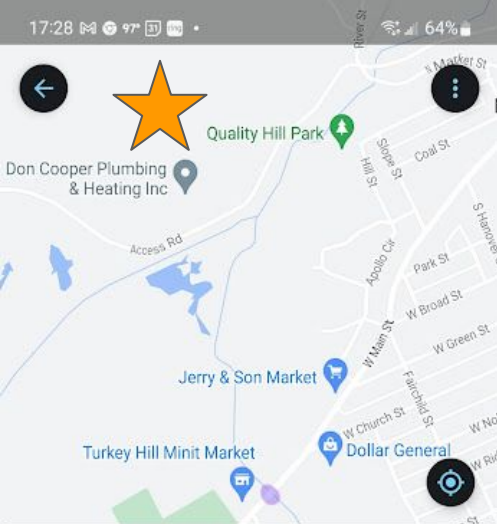
North Branch Newport Headwaters @ Spring Street and Glen Lyon Pump (dry)

Running orange @ Spring Street, but dry at the pump discharge. Another unidentified discharge in that ¼ mile?

N B Headwaters @ Spring St

Glen Lyon Pump (dry)





South Branch Newport @ Main Street #17 & North Branch Newport @ RR grade #10

Site #17 chem.

- Temp. 21.6 C = 71 F
- D.O. 4.55 mg/L
- Cond. 501 uS/cm
- TDS 268.1 mg/L
- pH 7.14 su
- ORP -11.8 mV
- Minnows & frogs in ponded water under bridge

Site #10 chem.

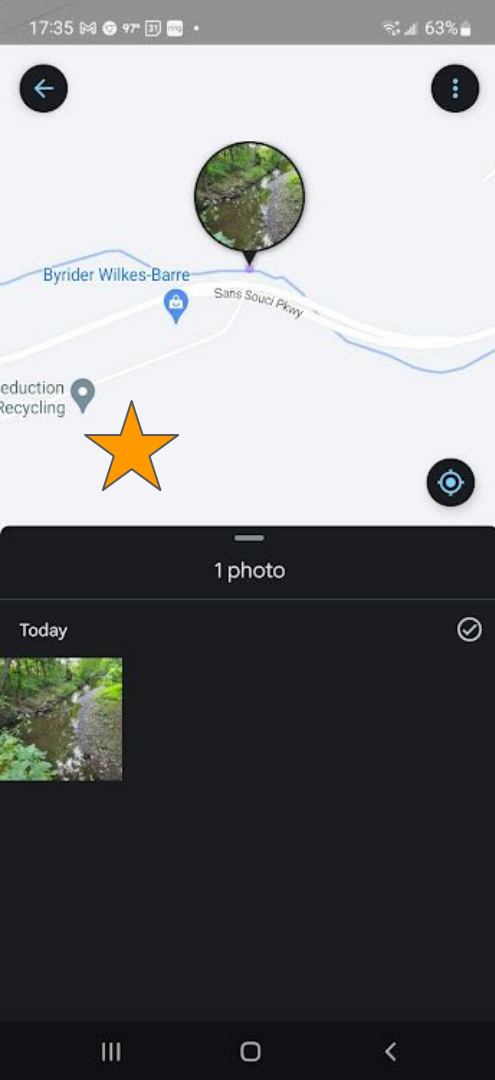
- Temp. 22.6 C = 73 F
- D.O. 6.15 mg/L
- Cond. 1016 uS/cm
- TDS 532 mg/L
- pH 7.36 su
- ORP 127.6 mV
- Minnows and frogs in ponded water in channel



S B Newport @ Main St

No photos of other sites

Newport Mainstem Site # 19 is flowing & accessible @ Whitney Point; instead of #22?



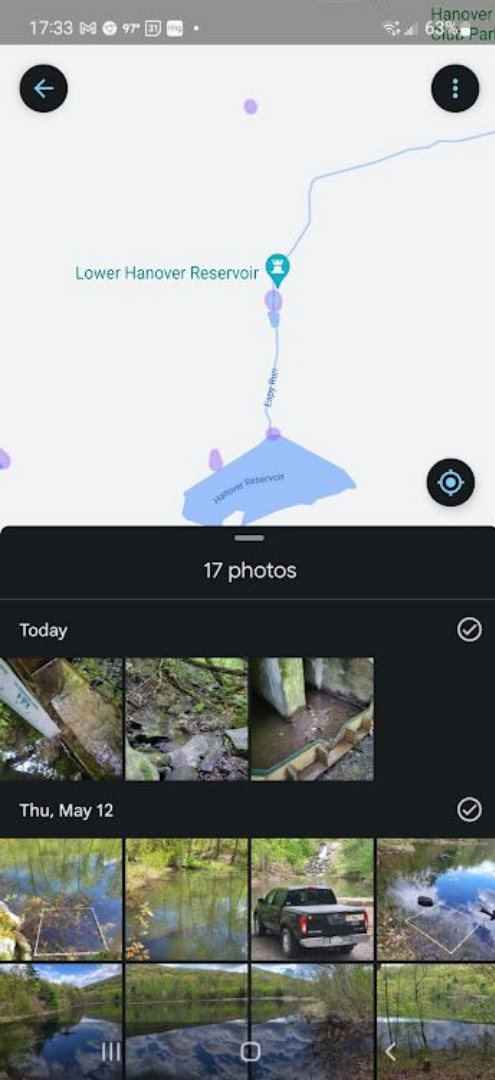
Warrior Run @ Sans Souci Brickyard

- Temp. 20.9 C = 69 F
- D.O. 7.65 mg/L
- Cond. 928 uS/cm
- TDS 504 mg/L
- pH 7.74 su
- ORP 143.2 mV
- Fish present



Warrior Headwater site in Hanover Industrial Park?

Did not recon, but John may know more about location and potential.



Espy Headwaters below Lower Hanover Reservoir

$\frac{3}{4}$ " on v-notch = 0.02 cfs = 9 gpm

- Temp. 17.7 C = 64 F
- D.O. 6.41 mg/L
- Cond. 51.4 μ S/cm
- TDS 29.7 mg/L
- pH 7.734 su
- ORP 142.2 mV
- frogs in channel



Espy Headwaters Weir



Downstream of Weir